



FLOATING SILT CURTAIN

Layfield produces Floating Silt Curtains (turbidity curtains) designed to isolate silts and sediment matter within bodies of water. Our products provide silt and sediment control in streams, rivers and other waterways during shoreline construction projects. Our curtains are manufactured from high-strength, non-absorbent, high-filtration fabrics.



Our unique design allows for a quick, reliable, reusable, cost-effective environmental containment solution.



High visibility international orange RPE top curtains



Quick-connection hardware makes assembly easy.



A user-supplied weight is added to the bottom pocket.

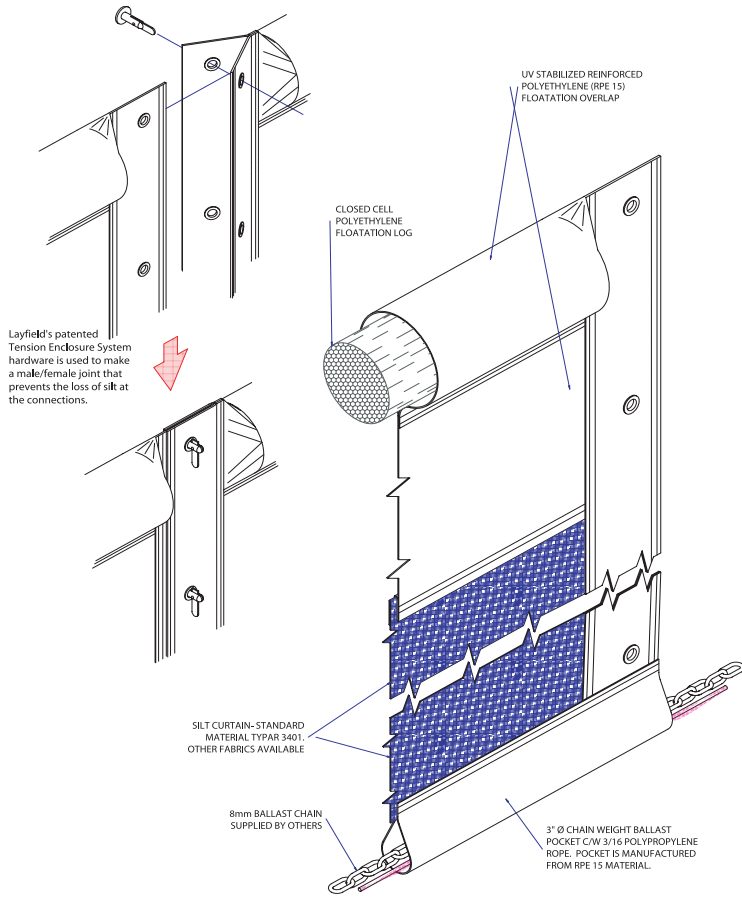


Product Features

- Protects the natural habitat
- Provides effective silt and sediment control
- Modular connection system
- Custom sizes and construction
- Permeable and Impermeable Designs

FSC Typical Specifications

	Approx. Water Depth	Length	Weight	Packaged Size
FSC 7	7ft (2.1m)	50ft (15m)	30lbs (14kg)	13ft (4m) x 16in (.30m) dia
FSC 13	13ft (4.0m)	50ft (15m)	40lbs (18kg)	13ft (4m) x 18in (.35m) dia
FSC 19	19ft (5.8m)	50ft (15m)	50lbs (23kg)	13ft (4m) x 20in (.4m) dia



Construction: The body of the Floating Silt Curtain (FSC) is produced from a Typar® 3401 geotextile which is a strong, high filtration material. The float and the bottom sleeve component of the FSC are wrapped with a UV-stable, high strength reinforced polyethylene (RPE®) material for durability. Increasing the length of the FSC is easily done by joining sections of FSC by using our patented male / female edge construction and special quick-connection hardware.

Layfield manufactures Floating Silt Curtains (FSC's) in standard heights and lengths. All FSC's come with Layfield's patented quick connection hardware for ease of use. Our FSC units are preassembled in 50 ft (15 m) lengths and are ready to use simply by connecting the number of units required and by adding a suitable weight to the bottom.

FSCs are available in nominal heights of 7 ft, 13 ft and 19 ft (2.1 m, 4.0 m and 5.8 m). Other heights are available by custom order. The body of the silt curtain utilizes Typar® 3401 geotextile, a strong, high filtration material. Other grades and styles of geotextile bodies are available by special order. The float and the bottom sleeve of the Layfield FSC are wrapped with UV-stable, high-strength RPE® materials for durability.

Local regulations may vary and Layfield will manufacture FSCs to suit most local requirements. A common requirement is for a cable in the top of the FSC.

A product related to the FSC is the impermeable baffle curtain. Layfield makes baffle curtains from geomembrane materials for a variety of applications.

Please contact your nearest Layfield branch for further information on our Floating Silt Curtains or Baffle Curtains.

1. A weight must be added to the bottom sleeve prior to use. A rope is provided in the sleeve to assist in placing a chain, cable or other weight. Weight can also be added by making small slits in the bottom sleeve and inserting sections of re-bar, pipe, steel or any other heavy material.
2. Custom sizes and materials are available by special order.
3. All units come folded and rolled into the sizes shown.
4. Enough hardware is supplied with each unit to connect the next unit.

Please contact Layfield for further information on our Floating Silt Curtain or impermeable Baffle Curtains.

**United States Customer Service
(800) 796-6868**

usa@geomembranes.com

**Canada Customer Service
(800) 840-2884**

canada@geomembranes.com

