

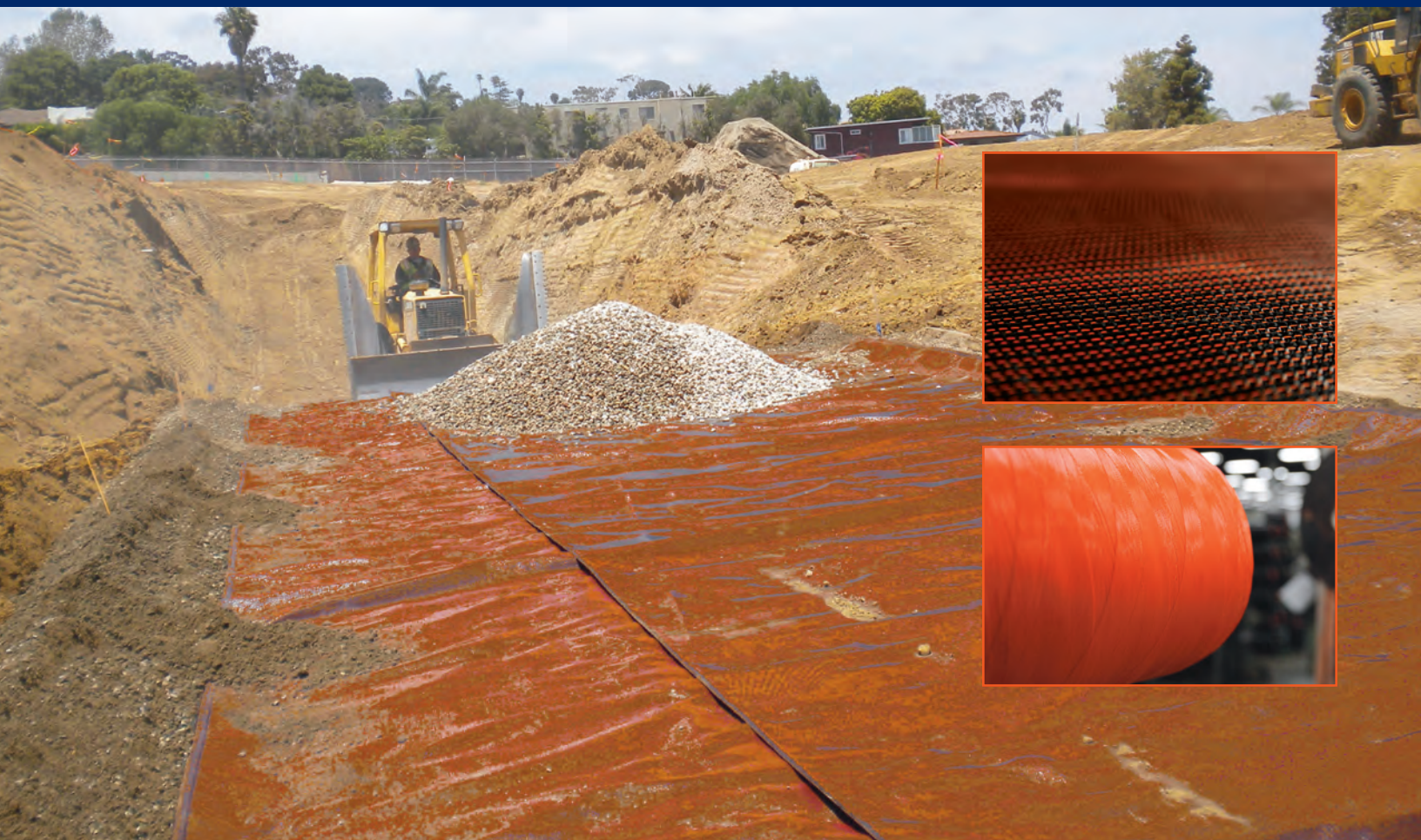
TENCATE
Mirafi[®]

RS*i*-Series

GEOSYNTHETICS

Pavement Base Reinforcement
Subgrade Stabilization

RS580*i*
RS380*i*
RS280*i*



Protective & Outdoor Fabrics
Aerospace Composites
Armour Composites

Geosynthetics
Industrial Fabrics
Synthetic Grass

TENCATE
materials that make a difference

Superior *integration**.

With the new Mirafi® RSi-Series, it's like comparing apples to oranges for Roadway Reinforcement.

Orange wins.

You asked for the impossible...and we responded.



Our new game-changing products, Mirafi® RSi-Series geosynthetics will revolutionize the way you look at geosynthetics for roadway stabilization.

As the leader in geosynthetic solutions, TenCate



MiraSpec Design Solutions Software provides cost savings and "green" savings by incorporating a geosynthetic.



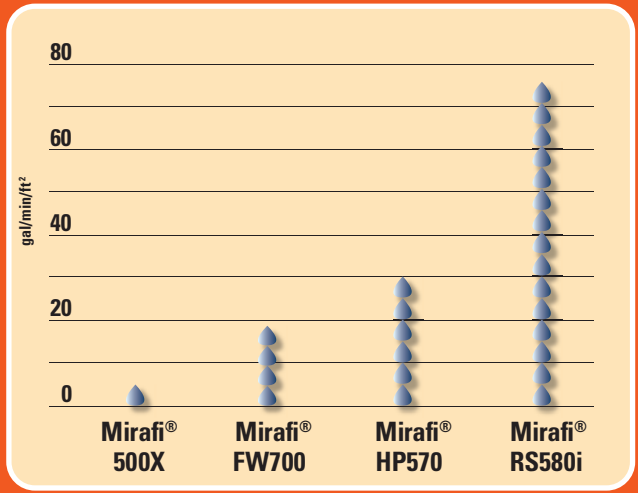
MiraSpec Design Solutions Software is easy to use and is available at no cost at www.Mirafi.com

Geosynthetics began the extensive research and design process of looking for the "perfect" geotextile that could move more water while concurrently retaining more soil within a roadway system. This product would also need to hold more force with less overall system movement in order to improve the base strength and support heavier loads; thus, resulting in longer life, less maintenance and costs, and better performance.

The solution we developed... Mirafi® RSi.

We have proven that a geotextile can solve a complex roadway problem, where once upon a time, the only solution

Geosynthetic Waterflow



considered by some was a geogrid product. Mirafi® RSi is all about *integration*...

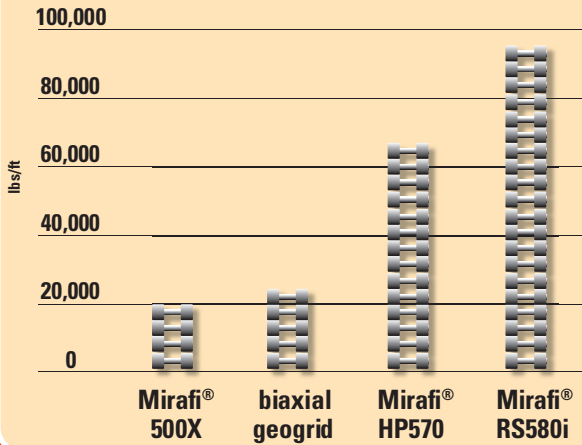
...Integration of a superior multi-layered construction of woven fibers of various dimensions specifically positioned relative to adjoining fibers to create three times the water flow AND an increase in AOS sieve size.

Because Mirafi® RSi-Series geosynthetics have higher tensile modulus properties than comparable stabilization products on the market today, it is perfect for base course reinforcement and subgrade stabilization in roads,



MODULUS • WATER FLOW • CONFINEMENT

Modulus at 2% Strain Cross-Machine Direction



railways, runways and haul roads; and for stabilization of embankments on soft foundations. It also performs well for liner support, voids bridging, hazardous pond closures and other environmental purposes. Mirafi® RSi-Series geosynthetics are available in a variety of roll sizes to fit your specific project needs and requirements.

Because no one understands geosynthetics better than TenCate Geosynthetics...our materials make a difference.

* Integration refers to the overall set of described characteristics based on a review of technical specifications for comparable products published by their respective manufacturers. Individual characteristics of these products vary and may meet, exceed, and fall below one or more of the above described individual characteristics.

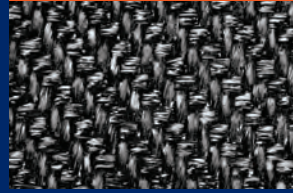


Advantages

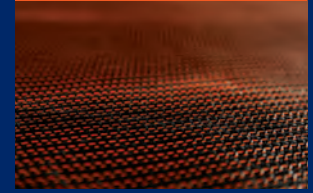
Go to www.mirafi.com
for product demonstrations video.

Product Identification

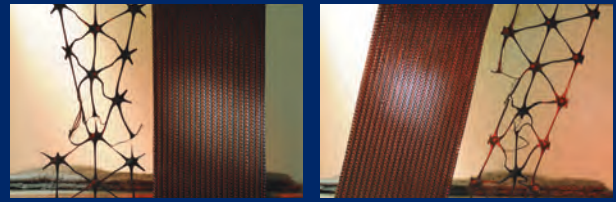
Mirafi® HP Geotextile
(Typical)



Mirafi® RS580i



Geogrids vs. Mirafi® RS580i



Strength at Every Angle



Go with the Flow



Walk the Walk



RS380i & RS580i/Patent # 8,333,2200 and 8598,054. RS280i/Patent Pending.

• SEPARATION • PRODUCT IDENTIFICATION

TenCate develops and produces materials that increase performance, reduce costs and enable people to achieve what was once unachievable. Our goal is to contribute significantly to progress in the industries in which we work.

The information contained herein is to the best of our knowledge accurate, but since the circumstances and conditions in which it may be used are beyond our control, we do not accept liability for any loss or damage, however arising, which results directly or indirectly from use of such information. Nor do we offer any warranty or immunity against patent infringement.

Mirafi® is a registered trademark of Nicolon Corporation.

© 2014 Nicolon Corporation. All Rights Reserved.

11.14

365 South Holland Drive Tel 800 685 9990 Fax 706 693 4400
Pendergrass, GA 30567 Tel 706 693 2226 www.mirafi.com



 **TENCATE**
materials that make a difference