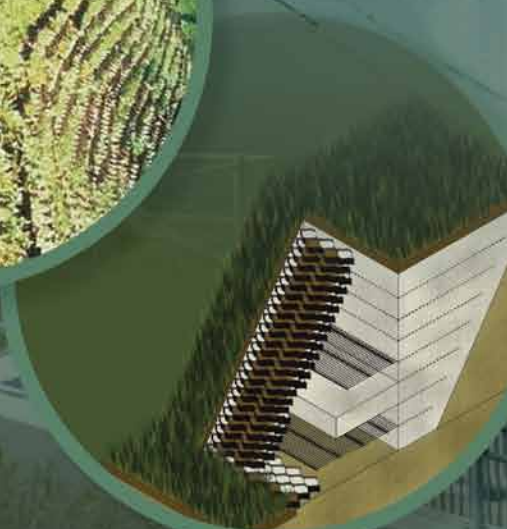




VEGETATED MSE/RSS SLOPES

- Durable
- Safe
- Cost Effective
- Environmentally Friendly
- Aesthetically Pleasing
- Low Maintenance
- No Graffiti
- LEED Points
- Versatile

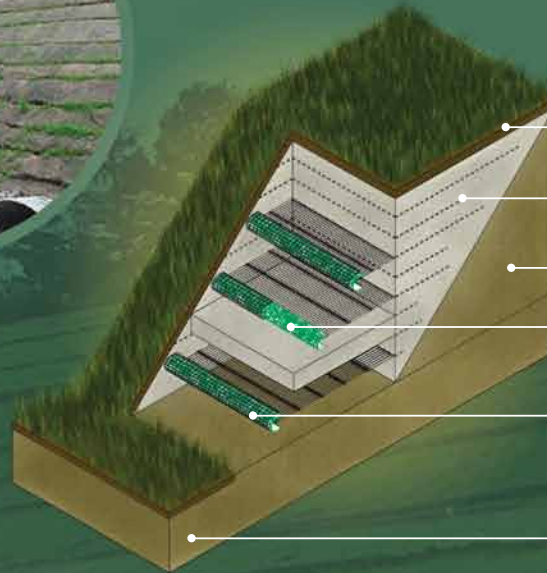




Geogrid Wrap (up to 45 degrees)



- Geogrid (wrap) with Erosion Control Blanket (ECB)



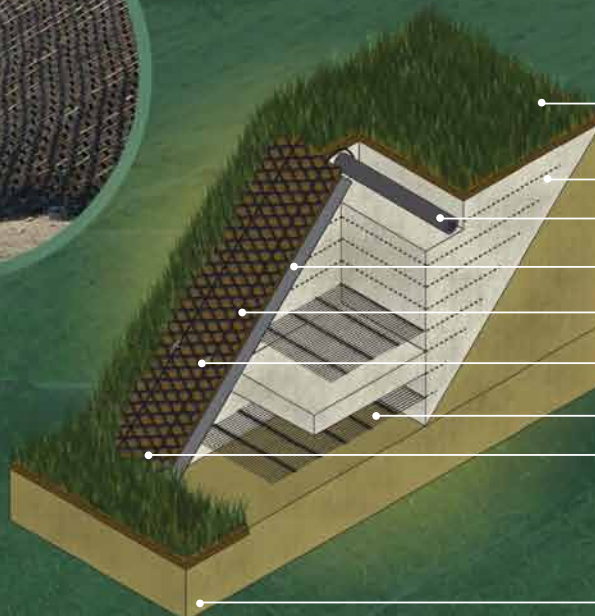
- SEEDED TOPSOIL
- REINFORCED BACKFILL
- RETAINED SOIL
- EROSION CONTROL BLANKET (ECB)
- GEOGRID
- FOUNDATION SOIL



Geoweb® Face (up to 45 degrees)



- Geoweb® with Geosynthetic fabric used on the slope face



- SEEDED TOPSOIL
- RETAINED SOIL
- REINFORCED BACKFILL
- DEADMAN ANCHOR
- GEOSYNTHETIC UNDERLAYER
- GEOWEB® SLOPE COVER
- ATRA® ANCHOR
- GEOGRID
- TENDON
- FOUNDATION SOIL

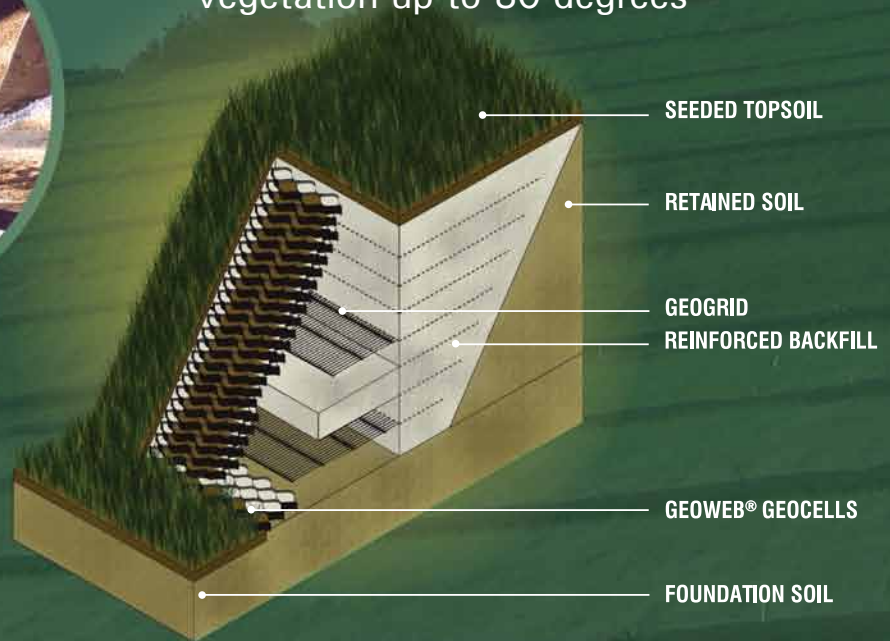




Stacked Geoweb® (up to 70 degrees)



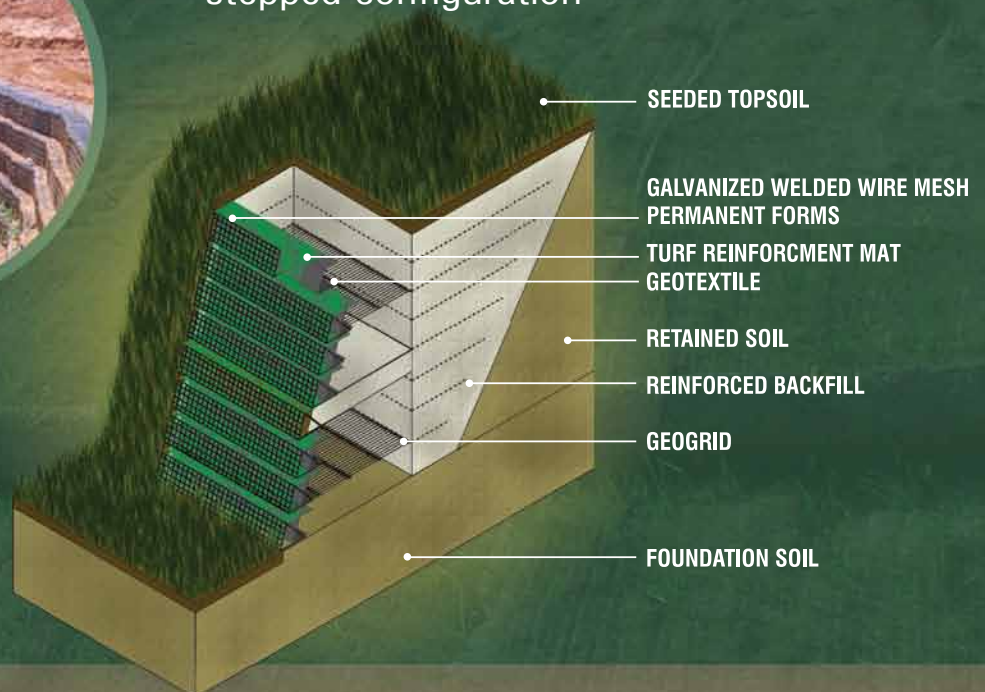
- Feasible to construct without vegetation up to 80 degrees



Wire Mesh Face (vegetated up to 70 degrees, or up to 90 degrees non-vegetated)



- May be built sloped or in a stepped configuration



Layfield also offers wall systems as well as non vegetated and concrete facing options.
Actual details and components utilized are subject to project specific design.

Layfield Reinforced Soil Structures Service and Supply Package

Our upfront service package for MSE/RSS slopes includes:

- Technical presentations
- Preliminary feasibility consultations
- Budget estimates
- Specification support
- Site visit for consultation

Typical contract packages include supply of:

- Engineered and sealed design and construction drawings of the structure(s)
- Supply of slope facing system, soil reinforcement and accessories
- Delivery to the job site
- Technical assistance on site

Other services available:

- For temporary slope structures and permanent retaining walls please contact your local Layfield representative

For more information on EnviroSlope for your next construction project please contact Layfield.



(800) 840-2884 Canada
(800) 377-8404 United States

www.layfieldenvironmental.com

San Diego Seattle Vancouver Edmonton Calgary Toronto